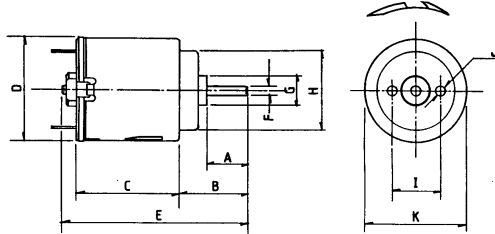


## RE-140 (3 POLE) & RE-140/1



Part No. 457RE-140 (WITH BRACKET)  
 Part No. 719RE-140 (WITHOUT BRACKET)  
 Part No. 457RE-140/1 (WITH BRACKET)  
 Part No. 719RE-140/1 (WITHOUT BRACKET)  
 Part No. 724 MOTOR BRACKET (90° ONLY)



Weight 20g (approx)

DIMENSIONS	A	B	C	D	E	F	G	H	I	J	K
Millimeter	8.3	14.0	21.0	21.0	38.0	2.0	6.15	16.0	10.0	2.0	20.15
Decimal Inches	0.33	0.55	0.827	0.827	1.496	0.079	0.242	0.63	0.394	0.079	0.793

MODEL	VOLTAGE		NO LOAD		AT MAXIMUM EFFICIENCY						STALL TORQUE	
	OPERATING RANGE	NOMINAL	SPEED	CURRENT	SPEED	CURRENT	TORQUE		OUTPUT	EFF	TORQUE	
			R.P.M.	A	R.P.M.	A	oz-in	g-cm	W	%	oz-in	g-cm
RE-140	1.5-3	1.5v Constant	8200	0.190	6250	0.62	0.089	6.4	0.400	44.2	0.375	27.0
RE-140	1.5-3	3v Constant	15300	0.26	12200	1.04	1.444	13	2.51	52.3	0.750	64.0
RE-140/1	3-9	6v Constant	9200	0.066	7071	0.219	0.11	8.1	0.589	44.79	0.48	35.1

Stall Current RE-140 at 1.5v = 1.6A RE-140 at 3v 3.0A, RE-140/1 at 6v 0.7A