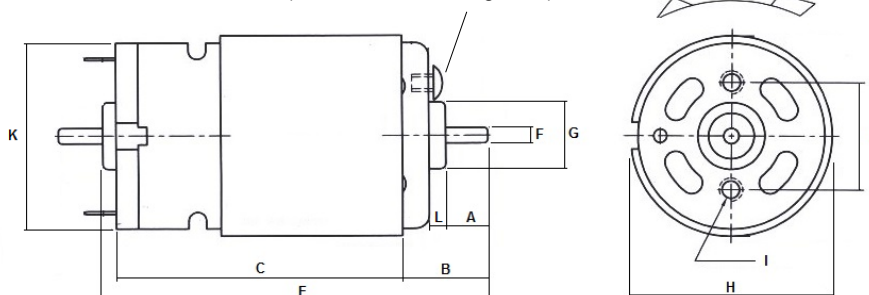


RE-385LN (5 POLE). NOISE ATTENUATED



Part No. 457RE-385LN (WITH BRACKET)
 Part No. 719RE-385LN (WITHOUT BRACKET)
 Part No. 725 MOTOR BRACKET (90° ONLY)

Restriction of screw length:
 2.5mm MAX (From Motor Mounting Face)



Weight 110g (approx)

DIMENSIONS	A	B	C	E	F	G	H	I	J	K	L
Millimeter	6.7	8.8	46.6	64.0	2.3	10.0	30.0	M2.6	16.0	27.0	2.5

MODEL	VOLTAGE		NO LOAD		AT MAXIMUM EFFICIENCY						STALL TORQUE	
	OPERATING RANGE	NOMINAL	SPEED	CURRENT	SPEED	CURRENT	TORQUE		OUTPUT	EFF	TORQUE	
			R.P.M.	A	R.P.M.	A	oz-in	g-cm	W	%	oz-in	g-cm
RE-385LN	6 - 12	12v Constant	7200	0.19	5950	0.9		110	6.72	62		660

Stall Current RE-385LN at 12v = 5.0A